

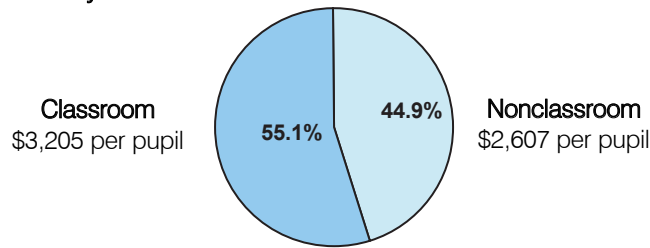
Classroom Dollars and Proposition 301 Results

Yuma Union High School District

District size:	Large
Students attending:	8,518
Number of schools:	5
Number of certified teachers:	420

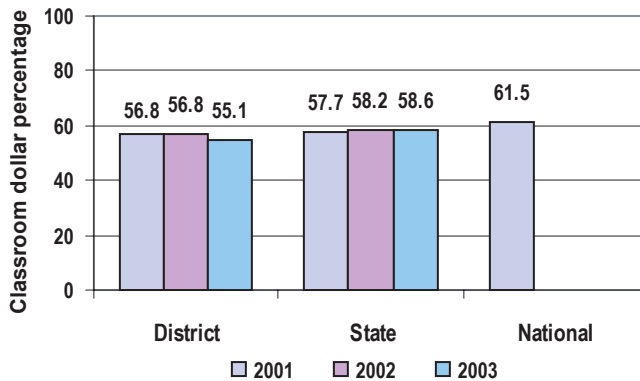
Classroom Dollars

Fiscal year 2003



Classroom dollar ranking: 136 of 226 districts.

3-year comparison



Expenditures by function

	Percentage				
	District			State	National
	2001	2002	2003	2003	2000
Classroom dollars	56.8	56.8	55.1	58.6	61.7
Nonclassroom dollars:					
Administration	11.0	10.4	11.5	9.9	10.9
Plant operations	11.2	11.6	12.5	11.7	9.6
Food service	5.2	5.5	5.6	4.6	4.0
Transportation	5.8	5.6	5.5	3.9	4.0
Student support	7.0	6.9	6.8	6.8	5.0
Instruction support	3.0	2.9	2.7	4.3	4.5
Other		0.3	0.3	0.2	0.3

Comparative Information

	District			State
	2001	2002	2003	2003
Student/teacher ratio	20.9	20.9	20.3	17.9
Average teacher salary	\$29,603	\$39,804	\$42,006	\$40,328
Average years' experience	9.0	9.1	8.7	8.7

Proposition 301

	2002 Expenditures	2003 Expenditures
Base	\$ 446,575	\$ 430,381
Performance	927,819	1,128,676
Menu	528,887	950,101
Total	<u>\$1,903,281</u>	<u>\$2,509,158</u>

District-reported 2003 results

Teacher pay

- On average, each teacher, speech pathologist, audiologist, librarian, and counselor earned an additional \$3,342 in salary.

Performance

- The District accomplished its goals, which were based on district performance.
- Goals were linked to improving student scores on standardized tests, maintaining a 96 percent or higher attendance rate, and maintaining an 80 percent graduation rate and a 6 percent dropout rate.
- Teachers also completed 15 hours of professional development training or at least 1 college credit.

Menu

- Monies were used primarily to pay for increased health insurance benefits.
- 8 teachers were hired to reduce class sizes.
- For dropout prevention, one school hired an attendance officer, another purchased a supplemental reading program, and a third provided tutoring for at-risk pupils.
- Remaining monies were used for AIMS intervention.