

Classroom Dollars and Proposition 301 Results

Washington Elementary School District

Maricopa County

District size: Very Large
 Students attending: 22,607
 Number of schools: 32
 Number of certified teachers: 1,318

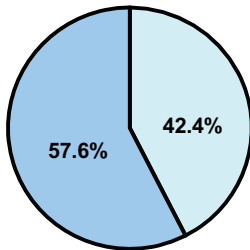
Classroom Dollars

Fiscal year 2008 averages per pupil

District

State

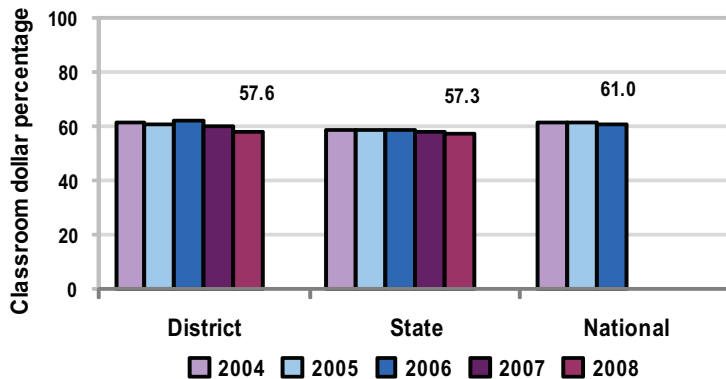
Classroom
 \$4,716
 \$4,480



Nonclassroom
 \$3,471
 \$3,333

Total
 \$8,187
 \$7,813

5-year comparison



Expenditures by function

	District					State 2008	National 2006
	2004	2005	2006	2007	2008		
Classroom dollars	61.3	60.8	62.0	60.1	57.6	57.3	61.0
Nonclassroom dollars:							
Administration	8.7	8.6	7.9	8.3	8.2	9.2	10.8
Plant operations	9.6	9.9	9.0	9.0	10.3	11.3	9.9
Food service	5.7	5.6	6.1	5.9	6.3	4.8	3.8
Transportation	3.7	3.7	4.3	4.5	4.4	4.4	4.2
Student support	7.2	6.9	6.8	7.6	8.2	7.4	5.2
Instruction support	3.8	4.5	3.9	4.5	5.0	5.4	4.9
Other				0.1		0.2	0.2

Comparative Information

	District			State 2008
	2006	2007	2008	
Student/teacher ratio	18.7	17.1	17.2	17.3
Average teacher salary	\$43,320	\$46,334	\$45,481	\$44,967
Average years' experience	9.2	8.9	8.6	8.1

Classroom dollar ranking: 68 of 230 districts.

Proposition 301

District-reported 2008 results

Teacher pay

- On average, each teacher earned an additional \$6,870 in salary, and each librarian, speech pathologist, counselor, student services specialist, and program coach earned between \$7,528 and \$9,716 in additional salary.

Performance

- The District accomplished its goals, which were based on district, school, and individual performance.
- Student achievement was measured and monitored using AIMS and district assessment scores.
- Schools held monthly parent involvement activities.
- Teachers created yearly professional learning plans.
- Schools offered before- and after-school classes and tutoring to meet the academic needs of students.
- District leadership and school quality were assessed through a parent satisfaction survey.
- Other goals were linked to student and teacher attendance rates, teacher evaluations, and leadership.

Menu

- Monies were used solely to increase eligible employee compensation.