

# Classroom Dollars and Proposition 301 Results

## Toltec Elementary School District

Pinal County

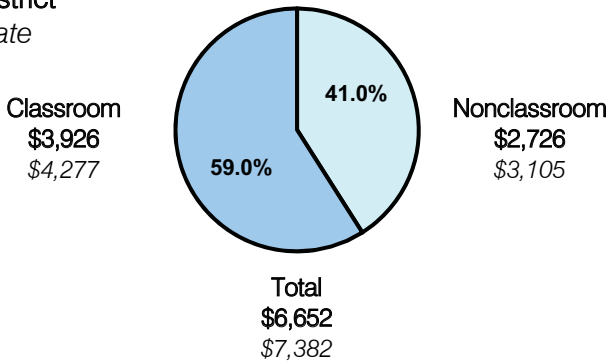
District size: Medium  
 Students attending: 1,189  
 Number of schools: 2  
 Number of certified teachers: 66

### Classroom Dollars

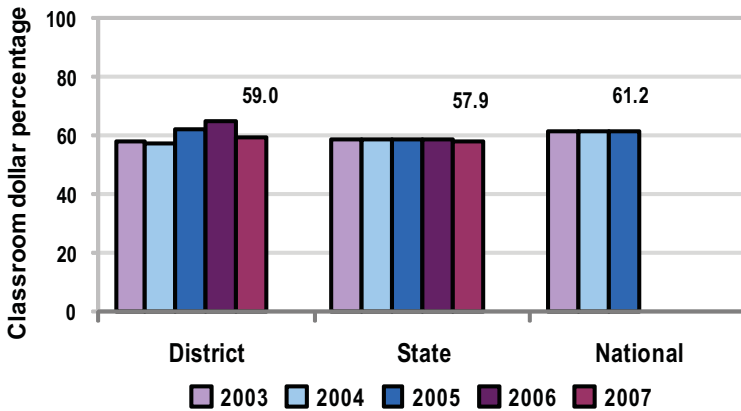
Fiscal year 2007 averages per pupil

District

State



5-year comparison



Expenditures by function

	Percentage					State 2007	National 2005
	District						
	2003	2004	2005	2006	2007		
Classroom dollars	58.1	57.5	62.3	64.6	59.0	57.9	61.2
Nonclassroom dollars:							
Administration	11.2	10.2	9.9	8.8	12.1	9.5	11.0
Plant operations	13.0	13.9	12.0	11.9	10.8	11.3	9.6
Food service	7.1	7.6	6.2	6.4	6.6	4.7	3.9
Transportation	7.2	7.3	6.6	4.8	6.1	4.3	4.1
Student support	1.9	2.0	1.5	1.6	3.3	7.3	5.2
Instruction support	1.5	1.5	1.4	1.9	2.1	4.8	4.8
Other			0.1			0.2	0.2

### Comparative Information

	District			State 2007
	2005	2006	2007	
Student/teacher ratio	17.3	19.4	18.0	17.4
Average teacher salary	\$34,994	\$35,008	\$35,657	\$43,833
Average years' experience	5.4	5.5	5.5	8.1

Classroom dollar ranking: 55 of 229 districts.

### Proposition 301

#### District-reported 2007 results

##### Teacher pay

- On average, each teacher, librarian, and speech pathologist earned \$5,300 in additional salary, and each instructional aide earned an additional \$664.

##### Performance

- The District accomplished its goals, which were based on district performance.
- The student achievement goal was based on standardized test scores.
- Teachers received acceptable performance evaluations.

##### Menu

- Monies were primarily used to increase teacher compensation.
- 29 instructional aides were paid to help reduce class sizes.