

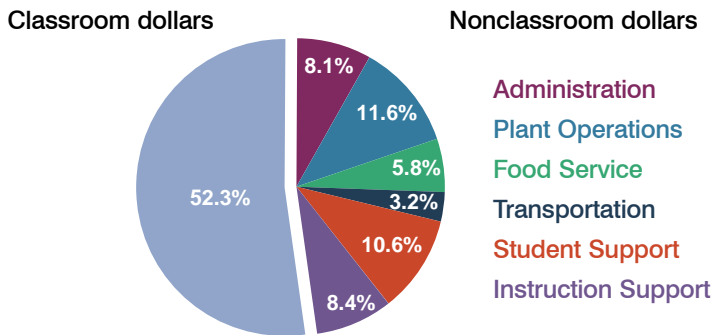
Sunnyside Unified School District

Pima County
Peer groups: Efficiency 2, Achievement 21
Legislative district(s): 29

District size: Large
Students attending: 16,633
Number of schools: 22

OPERATIONAL EFFICIENCY

Spending by function

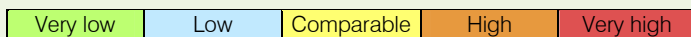


5-year trend

Total spending per pupil increased by 14 percent. Spending in the classroom varied year to year, decreasing significantly overall from 57.8 to 52.3 percent. Spending on plant operations and student support increased and spending on instruction support increased significantly, while spending in other nonclassroom areas remained fairly stable.

District's cost measures relative to peer group

Operational Area	Measure	District	Peer Average	State Average
Administration	Cost per pupil	\$633	\$627	\$721
	Students per administrator	64	68	66
Plant Operations	Cost per square foot	\$8.14	\$6.54	\$6.25
	Square footage per student	110	142	146
Food Service	Cost per meal equivalent	\$2.55	\$2.52	\$2.41
Transportation	Cost per mile	\$3.07	\$3.31	\$3.35
	Miles per rider	142	323	282

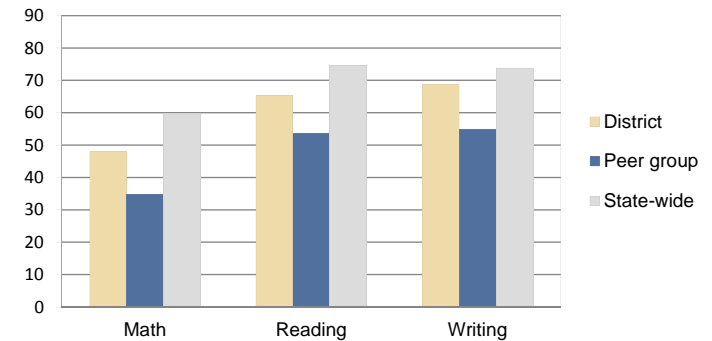


Per-pupil spending by function

	District		Peer 2010	State 2010	National 2008
	2009	2010			
Total	\$7,991	\$7,759	\$7,166	\$7,609	\$10,297
Classroom dollars	\$4,306	\$4,058	\$4,025	\$4,253	\$6,262
Nonclassroom dollars:	\$3,685	\$3,701	\$3,141	\$3,356	\$4,035
Administration	642	633	627	721	1,109
Plant Operations	898	898	917	914	1,003
Food Service	445	450	308	366	390
Transportation	226	248	326	342	438
Student Support	812	822	539	581	556
Instruction Support	662	650	424	432	539

STUDENT ACHIEVEMENT AND TEACHER INFORMATION

Percentage of students meeting state standards (AIMS)



Adequate Yearly Progress (AYP) toward federal goals

13 schools met all applicable AYP objectives for NCLB. 9 schools failed to meet 1 or more of the following objectives: percent tested (1); academic progress (8); graduation rate (1).

Student and teacher information

Measure	District	Peer Average	State Average
Attendance rate	93%	91%	94%
Graduation rate (2009)	67%	63%	76%
Poverty rate (2009)	37%	42%	21%
Student/teacher ratio	18.6	14.7	17.9
Average teacher salary	\$48,573	\$42,282	\$47,077
Average years' experience	11.0	12.3	10.6
Percent of teachers in first 3 years	21%	15%	20%

Proposition 301

Teacher and other staff pay

On average, each teacher earned \$5,485 in additional pay, and each librarian, speech pathologist, counselor, and prevention specialist earned between \$5,051 and \$12,306.

Performance pay plan goals and results

Type of goal	Goal met?
Student achievement	▴
Dropout/graduation rates	□
Student attendance	-
Parent/student satisfaction	-
Teacher attendance	■
Teacher professional development	■
Teacher evaluations	-
Tutoring	-
Other	-

■ = yes, □ = no, ▴ = partially, and - = no goal set