

Classroom Dollars and Proposition 301 Results

St. Johns Unified School District

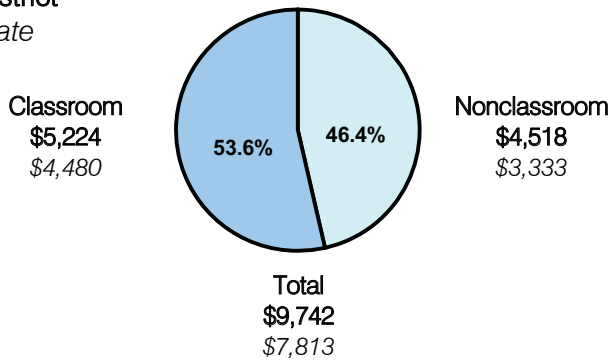
Apache County

District size: Medium
Students attending: 955
Number of schools: 3
Number of certified teachers: 66

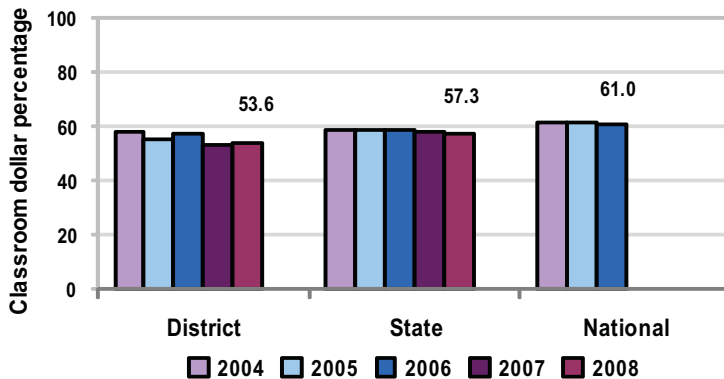
Classroom Dollars

Fiscal year 2008 averages per pupil

District
State



5-year comparison



Expenditures by function

| | Percentage | | | | | State 2008 | National 2006 |
|-----------------------|------------|------|------|------|------|------------|---------------|
| | 2004 | 2005 | 2006 | 2007 | 2008 | | |
| Classroom dollars | 57.9 | 55.2 | 55.5 | 53.3 | 53.6 | 57.3 | 61.0 |
| Nonclassroom dollars: | | | | | | | |
| Administration | 9.7 | 11.5 | 12.1 | 12.5 | 11.1 | 9.2 | 10.8 |
| Plant operations | 14.5 | 14.2 | 14.2 | 15.3 | 15.5 | 11.3 | 9.9 |
| Food service | 5.2 | 5.8 | 4.7 | 5.0 | 4.4 | 4.8 | 3.8 |
| Transportation | 5.0 | 5.6 | 5.5 | 5.2 | 5.2 | 4.4 | 4.2 |
| Student support | 4.8 | 4.7 | 4.8 | 6.3 | 7.3 | 7.4 | 5.2 |
| Instruction support | 2.8 | 3.0 | 3.2 | 2.4 | 2.9 | 5.4 | 4.9 |
| Other | 0.1 | | | | | 0.2 | 0.2 |

Comparative Information

| | District | | | State 2008 |
|---------------------------|----------|----------|----------|------------|
| | 2006 | 2007 | 2008 | |
| Student/teacher ratio | 14.5 | 15.2 | 14.4 | 17.3 |
| Average teacher salary | \$36,832 | \$33,290 | \$36,632 | \$44,967 |
| Average years' experience | 11.1 | 10.4 | 10.6 | 8.1 |

Classroom dollar ranking: 143 of 230 districts.

Proposition 301

District-reported 2008 results

Teacher pay

- On average, each teacher, librarian, speech pathologist, counselor, reading specialist, and reading coach earned between \$4,860 and \$5,934 in additional salary.

Performance

- The District accomplished its goals, which were based on district performance.
- The District's schools were labeled "Performing" or better by ADE for AZ LEARNS.
- 75 percent of parents completing satisfaction surveys rated schools as satisfactory.

Menu

- Monies were used primarily to increase eligible employee compensation.
- Monies were also used to pay for dropout prevention activities, such as an alternative school and lunch time and after-school instructional programs.