

Classroom Dollars and Proposition 301 Results

Solomon Elementary School District

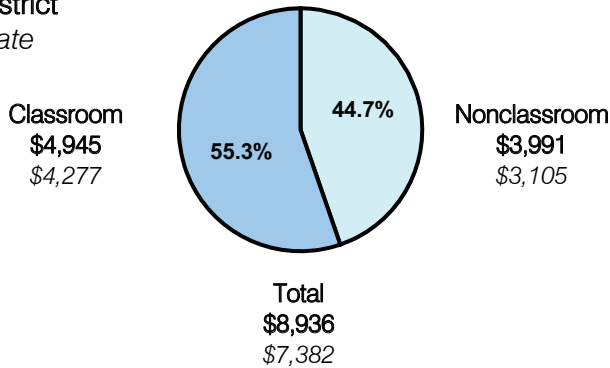
Graham County

District size: Very Small
 Students attending: 157
 Number of schools: 1
 Number of certified teachers: 12

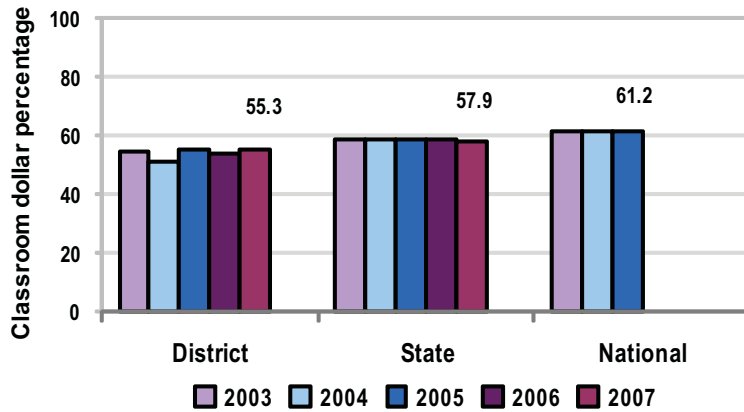
Classroom Dollars

Fiscal year 2007 averages per pupil

District
 State



5-year comparison



Expenditures by function

	Percentage					State 2007	National 2005
	District						
	2003	2004	2005	2006	2007		
Classroom dollars	54.5	50.9	55.1	54.1	55.3	57.9	61.2
Nonclassroom dollars:							
Administration	16.5	16.9	13.5	13.8	14.0	9.5	11.0
Plant operations	12.4	13.6	14.1	13.5	12.8	11.3	9.6
Food service	7.0	7.3	8.0	7.6	6.7	4.7	3.9
Transportation	5.8	5.5	5.5	5.2	4.4	4.3	4.1
Student support	3.6	4.5	2.9	4.5	5.2	7.3	5.2
Instruction support	0.2	1.3	0.9	1.3	1.5	4.8	4.8
Other					0.1	0.2	0.2

Comparative Information

	District			State 2007
	2005	2006	2007	
Student/teacher ratio	16.7	14.9	13.3	17.4
Average teacher salary	\$31,543	\$35,859	\$33,592	\$43,833
Average years' experience	8.3	8.3	7.8	8.1

Classroom dollar ranking: 111 of 229 districts.

Proposition 301

District-reported 2007 results

Teacher pay

- On average, each teacher earned an additional \$3,323 in salary, the nurse earned an additional \$1,855, and each instructional aide earned an additional \$100.

Performance

- The District accomplished most of its goals, which were based on school performance.
- Students maintained or improved standardized test scores in reading, math, and language.
- At least two-thirds of parents participating in a satisfaction survey rated the District's school as satisfactory.

Menu

- Teachers were compensated for participating in after-school activities, such as computer lab, tutoring, and community programs.
- Teachers could also earn additional monies for participating in professional development activities to become highly qualified.