

Classroom Dollars and Proposition 301 Results

Skull Valley Elementary School District

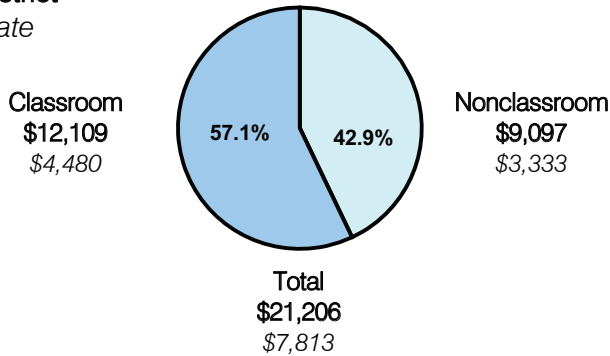
Yavapai County

District size: Very Small
 Students attending: 20
 Number of schools: 1
 Number of certified teachers: 3

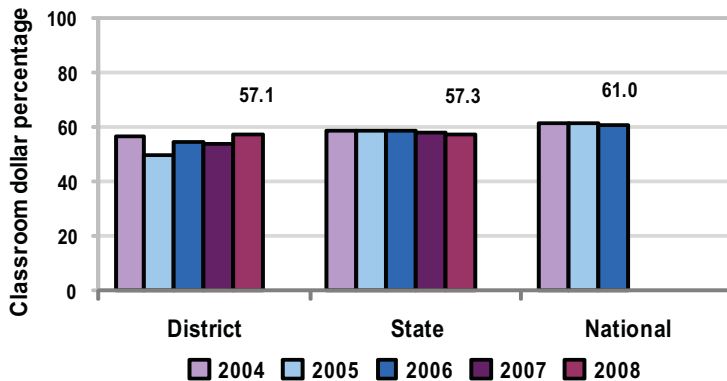
Classroom Dollars

Fiscal year 2008 averages per pupil

District
 State



5-year comparison



Expenditures by function

	Percentage					State 2008	National 2006
	District						
	2004	2005	2006	2007	2008		
Classroom dollars	56.4	49.6	54.6	53.6	57.1	57.3	61.0
Nonclassroom dollars:							
Administration	8.9	12.5	10.0	12.3	9.6	9.2	10.8
Plant operations	13.1	14.5	12.6	13.6	12.1	11.3	9.9
Food service	12.2	12.7	12.2	11.0	11.5	4.8	3.8
Transportation	9.4	10.2	8.9	7.4	7.5	4.4	4.2
Student support		0.5	1.3	1.7	2.0	7.4	5.2
Instruction support			0.4	0.4	0.2	5.4	4.9
Other						0.2	0.2

Comparative Information

	District			State
	2006	2007	2008	2008
Student/teacher ratio	14.0	13.0	7.8	17.3
Average teacher salary	\$32,126	\$32,461	\$34,969	\$44,967
Average years' experience	6.0	8.0	15.0	8.1

Classroom dollar ranking: 79 of 230 districts.

Proposition 301

District-reported 2008 results

Teacher pay

- On average, each teacher earned an additional \$2,865 in salary, and each instructional aide earned an additional \$2,021.

Performance

- The District accomplished its goals, which were the same as the prior fiscal year's goals and were based on district performance.
- The District's school earned a "Performing Plus" label from ADE for AZ LEARNS and achieved Adequate Yearly Progress.
- Students demonstrated growth in 4 state standards areas.
- Teachers maintained favorable performance evaluations and implemented the Six-Trait writing method in classroom instruction.
- Teachers also distributed and analyzed parent, student, and community member surveys in order to better understand their needs.

Menu

- Teachers earned additional compensation by serving as a test, English Language Learner, or special education coordinator.
- Instructional aides earned additional compensation by planning and implementing a student garden club.