

Classroom Dollars and Proposition 301 Results

Sahuarita Unified School District

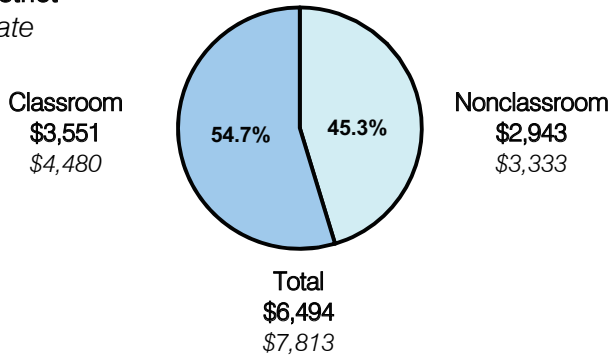
Pima County

District size: Medium
 Students attending: 4,239
 Number of schools: 6
 Number of certified teachers: 235

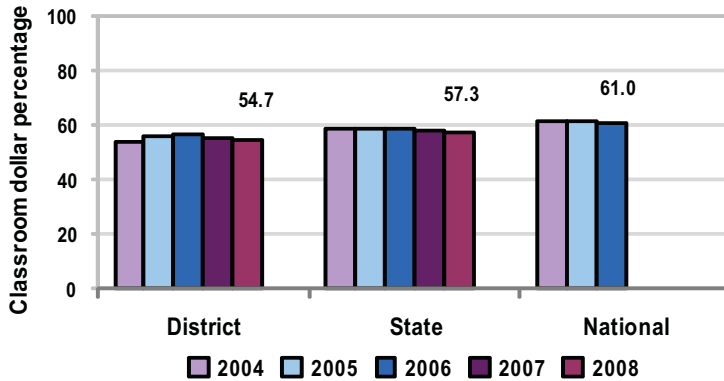
Classroom Dollars

Fiscal year 2008 averages per pupil

District
 State



5-year comparison



Expenditures by function

	Percentage					State 2008	National 2006
	District						
	2004	2005	2006	2007	2008		
Classroom dollars	54.0	55.8	56.7	54.9	54.7	57.3	61.0
Nonclassroom dollars:							
Administration	9.6	9.5	10.5	10.9	10.0	9.2	10.8
Plant operations	14.7	12.1	12.0	14.1	14.5	11.3	9.9
Food service	4.9	6.1	5.9	5.4	6.5	4.8	3.8
Transportation	8.6	7.5	7.0	5.2	4.9	4.4	4.2
Student support	5.6	6.6	6.3	6.8	6.9	7.4	5.2
Instruction support	2.6	2.4	1.6	2.7	2.5	5.4	4.9
Other						0.2	0.2

Comparative Information

	District			State 2008
	2006	2007	2008	
Student/teacher ratio	19.6	18.0	18.0	17.3
Average teacher salary	\$36,574	\$42,744	\$41,553	\$44,967
Average years' experience	7.8	7.4	8.0	8.1

Classroom dollar ranking: 124 of 230 districts.

Proposition 301

District-reported 2008 results

Teacher pay

- On average, each teacher, speech pathologist, and counselor earned between \$4,809 and \$5,010 in additional salary, and the librarian earned an additional \$9,069.

Performance

- The District accomplished its goals, which were similar to the prior fiscal year's goals and were based on district, school, and individual performance.
- Student achievement was measured by standardized test scores.
- Teachers developed and implemented professional growth plans, which targeted teaching strategy improvement in all academic content areas.
- Teachers also performed additional responsibilities related to leadership and tutoring and had satisfactory evaluations.

Menu

- Monies were used solely to increase eligible employee compensation.