

Classroom Dollars and Proposition 301 Results

Saddle Mountain Unified School District

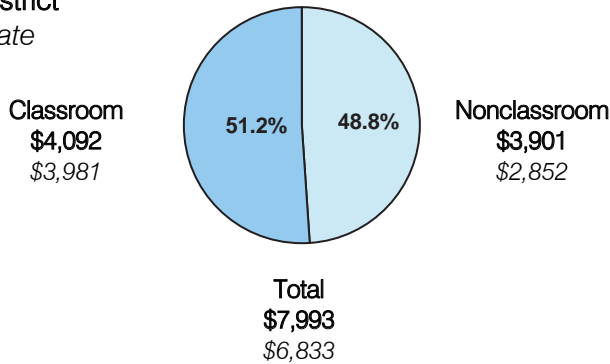
Maricopa County

District size: Medium
 Students attending: 955
 Number of schools: 2
 Number of certified teachers: 56

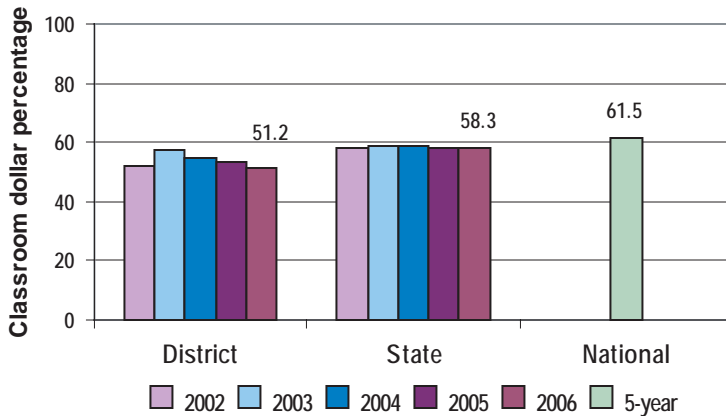
Classroom Dollars

Fiscal year 2006 averages per pupil

District
 State



5-year comparison



Expenditures by function

	Percentage					State 2006	National 5-year
	2002	2003	2004	2005	2006		
Classroom dollars	52.3	57.1	54.4	53.1	51.2	58.3	61.5
Nonclassroom dollars:							
Administration	11.6	9.8	12.0	10.8	10.2	9.4	11.0
Plant operations	18.6	15.4	14.6	12.1	14.9	11.2	9.6
Food service	5.0	5.5	5.5	3.5	4.4	4.7	3.9
Transportation	12.3	8.3	8.7	8.4	7.8	4.2	4.0
Student support		0.3	0.3	10.3	7.6	7.2	5.1
Instruction support	0.2	3.5	4.5	1.7	3.9	4.8	4.7
Other		0.1		0.1		0.2	0.2

Comparative Information

	District			State
	2004	2005	2006	2006
Student/teacher ratio	15.4	15.3	17.1	17.7
Average teacher salary	\$35,484	\$37,631	\$42,531	\$42,967
Average years' experience	7.8	8.2	7.8	8.3

Classroom dollar ranking: 166 of 229 districts.

Proposition 301

District-reported 2006 results

Teacher pay

- On average, each teacher, librarian, speech pathologist, and counselor earned an additional \$3,439 in salary, and each instructional aide earned an additional \$1,172.

Performance

- The District accomplished its goals, which were based on school performance.
- 90 percent of high school students met or exceeded standards on the AIMS test, and demonstrated improved writing skills.
- 80 percent of continuing elementary students met the AIMS writing standards or demonstrated improved writing skills through pre- and post-assessments.
- The high school had a dropout rate of less than 6 percent.

Menu

- Monies were used primarily to increase eligible employee compensation.
- Monies were also used for AIMS intervention and professional development activities.