

# Classroom Dollars and Proposition 301 Results

## Riverside Elementary School District

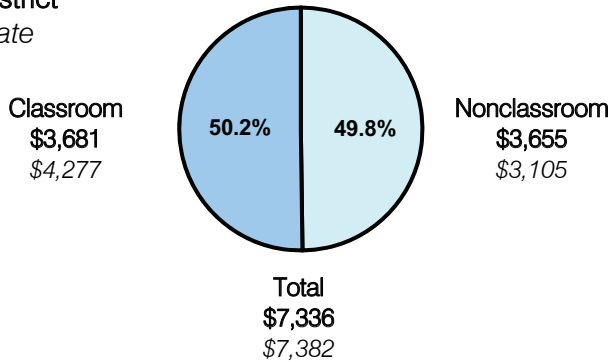
Maricopa County

District size: Medium  
 Students attending: 783  
 Number of schools: 2  
 Number of certified teachers: 19

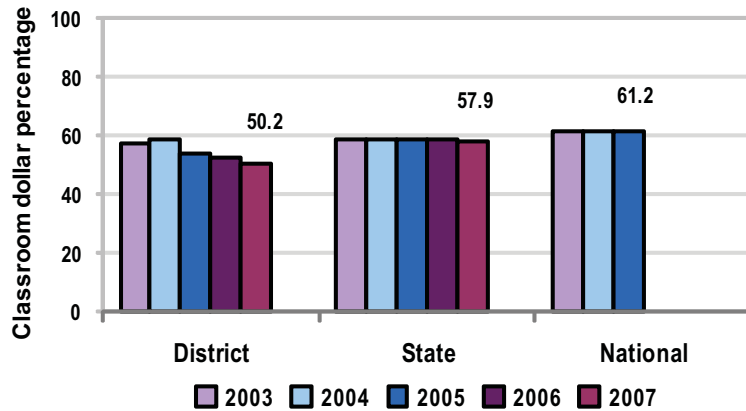
### Classroom Dollars

Fiscal year 2007 averages per pupil

District  
 State



5-year comparison



Expenditures by function

	Percentage					State 2007	National 2005
	District						
	2003	2004	2005	2006	2007		
Classroom dollars	57.3	58.6	53.8	52.4	50.2	57.9	61.2
Nonclassroom dollars:							
Administration	12.0	11.6	14.1	15.2	14.5	9.5	11.0
Plant operations	12.0	10.7	10.3	12.0	12.4	11.3	9.6
Food service	6.9	7.7	7.5	7.0	6.8	4.7	3.9
Transportation	2.9	2.6	3.1	2.6	3.2	4.3	4.1
Student support	5.8	5.7	9.4	9.5	10.9	7.3	5.2
Instruction support	3.1	3.1	1.8	1.3	2.0	4.8	4.8
Other						0.2	0.2

### Comparative Information

	District			State
	2005	2006	2007	2007
Student/teacher ratio	22.7	26.6	40.9	17.4
Average teacher salary	\$36,374	\$40,582	\$40,081	\$43,833
Average years' experience	6.2	3.7	3.6	8.1

Classroom dollar ranking: 175 of 229 districts.

### Proposition 301

#### District-reported 2007 results

##### Teacher pay

- On average, each teacher earned an additional \$1,138 in salary.

##### Performance

- The District accomplished its goals, which were similar to the prior fiscal year's goals and were based on district and individual performance.
- Students' AIMS test scores increased by 10 percent.
- Teachers attended at least 90 percent of parent/teacher conferences to review student achievement and participated in 30 hours of professional development activities.

##### Menu

- Monies continued to be used to pay for teachers to reduce 6th- and 8th-grade class sizes to 23 students per class and reading classes to 15 students per class.