

# Phoenix Union High School District

Maricopa County  
Operational peer group: A  
Legislative districts: 11, 13, 14, 15, 16

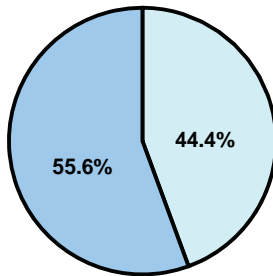
District size: Very Large  
Students attending: 24,845  
Number of schools: 16

## OPERATIONAL EFFICIENCY

### Average per-pupil spending

District  
State

**Classroom**  
**\$5,694**  
\$4,497



**Nonclassroom**  
**\$4,549**  
\$3,411

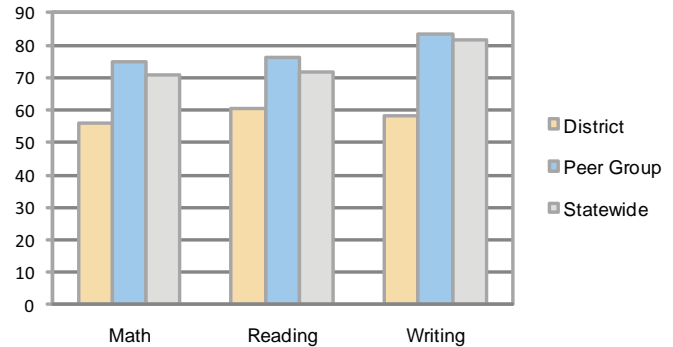
**Total**  
**\$10,243**  
\$7,908

### 5-year trend

Total spending per pupil increased by 19 percent. Spending in the classroom varied year to year and increased overall from 54.3 to 55.6 percent. Spending on plant operations and student support decreased, while spending in other nonclassroom areas was fairly stable.

## STUDENT ACHIEVEMENT AND TEACHER INFORMATION

### Percentage of students meeting state standards (AIMS)



### Adequate Yearly Progress (AYP) toward federal goals

5 schools met all applicable AYP objectives for NCLB. 10 did not because some students did not demonstrate sufficient academic progress. 1 did not because its graduation rate was not sufficient.

### Student and teacher information

Measure	District	Peer average	State average
Attendance rate	98%	96%	95%
Graduation rate (2008)	77%	86%	75%
Poverty rate	26%	14%	19%
Student/teacher ratio	16.7	17.5	17.1
Average teacher salary	\$61,532	\$50,748	\$45,209
Average years' experience	10.9	10.5	8.3
Percent of teachers in first 3 years	12%	20%	16%

### District's cost measures relative to peer group

Operational Area	Measure	District	Peer Average	State Average
Administration	Cost per pupil	\$858	\$639	\$729
	Students per administrator	71	77	66
Plant Operations	Cost per square foot	\$7.80	\$6.38	\$6.40
	Square footage per student	169	138	144
Food Service	Cost per meal equivalent	\$2.42	\$2.49	\$2.53
Transportation	Cost per mile	\$7.96	\$4.22	\$3.36
	Miles per rider	NR	298	271

Very Low    Low    Comparable    High    Very High

### Per-pupil spending by function

	District		Peer	State	National
	2008	2009	2009	2009	2007
<b>Total</b>	<b>\$10,157</b>	<b>\$10,243</b>	<b>\$7,781</b>	<b>\$7,908</b>	<b>\$9,683</b>
<b>Classroom dollars</b>	<b>\$5,700</b>	<b>\$5,694</b>	<b>\$4,577</b>	<b>\$4,497</b>	<b>\$5,903</b>
<b>Nonclassroom dollars:</b>	<b>\$4,457</b>	<b>\$4,549</b>	<b>\$3,204</b>	<b>\$3,411</b>	<b>\$3,780</b>
Administration	842	858	639	729	1,050
Plant Operations	1,311	1,319	881	920	951
Food Service	261	297	322	382	369
Transportation	426	457	330	343	406
Student Support	1,037	1,050	616	594	512
Instruction Support	541	531	398	431	470
Other	39	37	18	12	22

### Proposition 301

#### Teacher pay

On average, each teacher earned an additional \$7,571 in salary, and each librarian, speech pathologist, counselor, teacher on assignment, and mentor earned between \$290 and \$1,172.

#### Performance pay plan goals and results

Type of goal	Goal met?
Student achievement	■
Dropout/ graduation rates	▲
Student attendance	■
Parent/student satisfaction	■
Teacher attendance	▲
Teacher professional development	■
Teacher evaluations	■
Tutoring	■
Other	■

■ = yes, □ = no, and ▲ = partially