

# Classroom Dollars and Proposition 301 Results

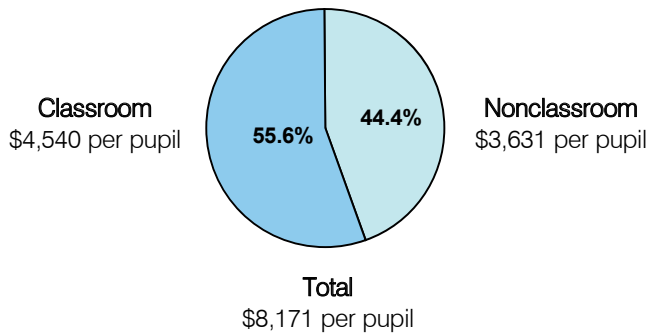
## Nadaburg Elementary School District

Maricopa County

District size: Medium  
 Students attending: 621  
 Number of schools: 1  
 Number of certified teachers: 38

### Classroom Dollars

Fiscal year 2005

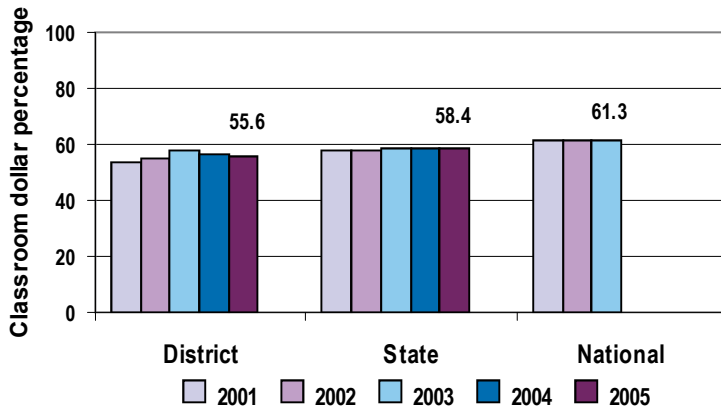


### Comparative Information

	District			State
	2003	2004	2005	2005
Student/teacher ratio	17.3	16.8	16.3	18.3
Average teacher salary	\$39,682	\$38,351	\$38,841	\$39,095
Average years' experience	9.4	8.8	8.8	8.5

Classroom dollar ranking: 115 of 228 districts.

### 5-year comparison



### Expenditures by function

	District					State 2005	National 2002
	2001	2002	2003	2004	2005		
Classroom dollars	53.3	54.7	58.0	56.1	55.6	58.4	61.5
Nonclassroom dollars:							
Administration	11.1	11.2	8.6	8.2	7.7	9.5	11.1
Plant operations	10.1	10.3	9.2	9.0	10.3	11.4	9.5
Food service	5.1	4.6	5.0	5.0	4.6	4.8	4.0
Transportation	9.8	9.7	11.2	10.6	10.5	4.1	4.0
Student support	8.9	8.1	6.4	9.5	9.6	7.0	5.0
Instruction support	1.7	1.4	1.6	1.6	1.7	4.6	4.7
Other						0.2	0.2

### Proposition 301

#### District-reported 2005 results

##### Teacher pay

- On average, each teacher earned an additional \$4,030 in salary and each speech pathologist earned an additional \$600.

##### Performance

- The District accomplished its goal, which was similar to the prior fiscal year's goal and was based on school performance.
- At least 60 percent of students taking pre- and post-assessments that were aligned with state standards were required to demonstrate 1 year's academic progress.

##### Menu

- Teachers could earn an additional \$1,531 by working 4 additional days or performing additional duties, such as aligning curriculum to state standards or mentoring other teachers in technology integration.