

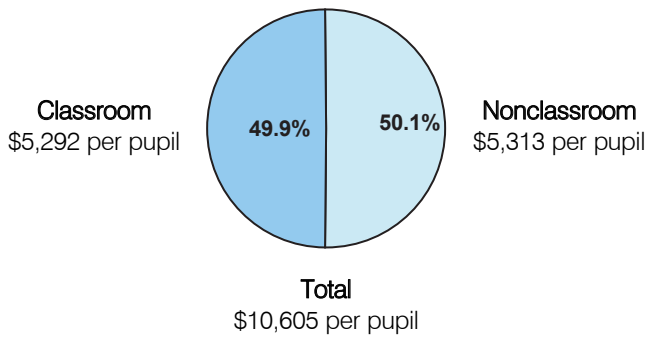
Classroom Dollars and Proposition 301 Results

McNeal Elementary School District

District size: Very Small
 Students attending: 29
 Number of schools: 1
 Number of certified teachers: 3

Classroom Dollars

Fiscal year 2004

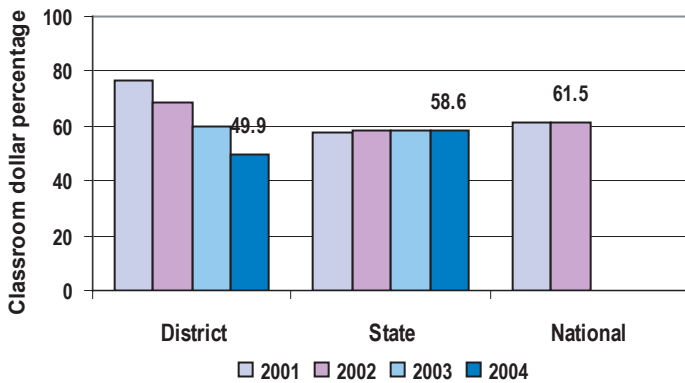


Comparative Information

	District			State
	2002	2003	2004	2004
Student/teacher ratio	11.0	9.3	9.7	18.2
Average teacher salary	\$35,084	\$37,315	\$32,656	\$38,534
Average years' experience	15.0	5.7	6.0	8.7

Classroom dollar ranking: 191 of 227 districts.

4-year comparison



Expenditures by function

	Percentage					
	District				State	National
	2001	2002	2003	2004	2004	2001
Classroom dollars	76.6	68.7	60.1	49.9	58.6	61.5
Nonclassroom dollars:						
Administration	9.5	12.4	13.7	22.6	9.5	10.9
Plant operations	7.3	10.9	10.9	16.3	11.7	9.7
Food service					4.7	4.0
Transportation	3.0	4.0	6.4	5.3	4.0	4.1
Student support	3.6	4.0	8.9	5.2	7.0	5.0
Instruction support				0.7	4.3	4.6
Other					0.2	0.2

Proposition 301

District-reported 2004 results

Teacher pay

- On average, each teacher earned an additional \$656 in salary. This does not include performance and menu monies, which were distributed in fiscal year 2005.

Performance

- The District accomplished its goals, which were based on school and individual performance.
- Goals were linked to student achievement on standardized tests, teacher professional development, and parent and student satisfaction.
- The school received positive ratings by students and parents on satisfaction surveys.
- 75 percent or more of parents attended parent-teacher conferences and back-to-school night.

Menu

- Monies were designated to increase teacher compensation and to pay teachers for participating in professional development activities.
- Teachers completed more than 261 professional development hours.