

Classroom Dollars and Proposition 301 Results

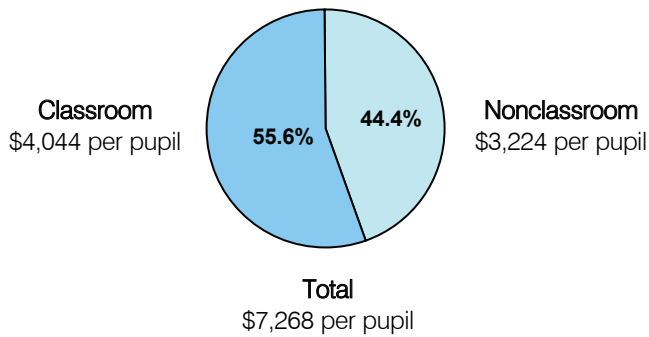
Littlefield Unified School District

Mohave County

District size: Small
 Students attending: 475
 Number of schools: 2
 Number of certified teachers: 30

Classroom Dollars

Fiscal year 2005

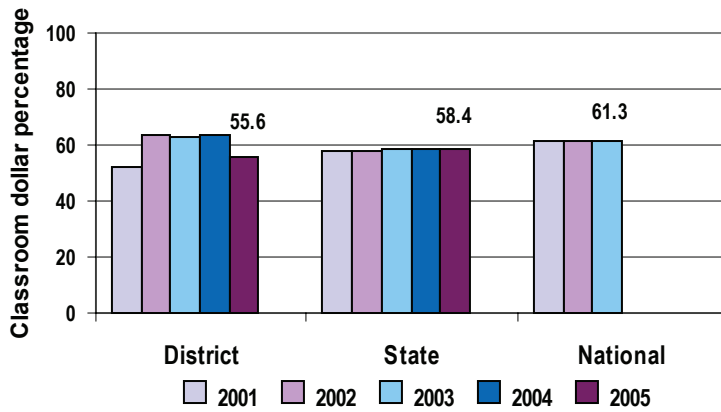


Comparative Information

	District			State
	2003	2004	2005	2005
Student/teacher ratio	n/a	15.8	15.8	18.3
Average teacher salary	\$31,982	\$34,028	\$33,412	\$39,095
Average years' experience	11.7	7.0	6.5	8.5

Classroom dollar ranking: 113 of 228 districts.

5-year comparison



Expenditures by function

	Percentage					State 2005	National 2002
	2001	2002	2003	2004	2005		
Classroom dollars	n/a	63.4	62.9	63.7	55.6	58.4	61.5
Nonclassroom dollars:	n/a						
Administration		12.5	11.5	10.5	15.6	9.5	11.1
Plant operations		9.3	9.3	9.0	10.8	11.4	9.5
Food service		7.1	6.7	6.7	6.6	4.8	4.0
Transportation		5.4	5.6	5.6	6.6	4.1	4.0
Student support		0.6	1.3	1.1	1.6	7.0	5.0
Instruction support		1.7	2.7	3.4	3.2	4.6	4.7
Other						0.2	0.2

Proposition 301

District-reported 2005 results

Teacher pay

- On average, each teacher earned an additional \$2,549 in salary.

Performance

- The District accomplished its goal, which was similar to the prior fiscal year's goal and was based on district performance.
- The District used pre- and post-tests to measure student achievement, and required student scores, on average, to demonstrate 1 year's academic progress.

Menu

- An additional 1st-grade teacher reduced class sizes from 24 students to 16 students.
- As an incentive to recruit highly qualified teachers, the District continued to pay 100 percent of employee health insurance premiums. During fiscal year 2005, the District also began paying for 75 percent of dependent coverage.