

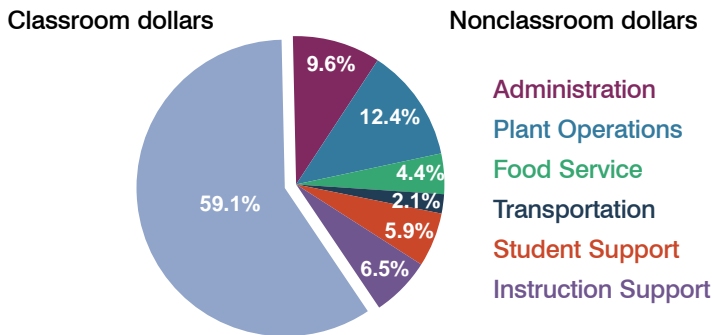
Lake Havasu Unified School District

Mohave County
Peer groups: Efficiency 4, Achievement 19
Legislative district(s): 3

District size: Medium-Large
Students attending: 6,130
Number of schools: 10

OPERATIONAL EFFICIENCY

Spending by function

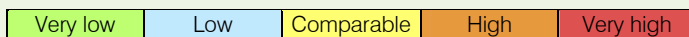


5-year trend

Total spending per pupil increased by 24 percent. Spending in the classroom was fairly stable, but decreased overall from 61.1 to 59.1 percent. Spending on instruction support increased significantly, while spending on food service decreased significantly. Spending in other nonclassroom areas remained fairly stable.

District's cost measures relative to peer group

Operational Area	Measure	District	Peer Average	State Average
Administration	Cost per pupil	\$632	\$778	\$721
	Students per administrator	62	65	66
Plant Operations	Cost per square foot	\$5.87	\$5.81	\$6.25
	Square footage per student	138	171	146
Food Service	Cost per meal equivalent	\$2.11	\$2.53	\$2.41
Transportation	Cost per mile	\$2.91	\$2.94	\$3.35
	Miles per rider	467	297	282

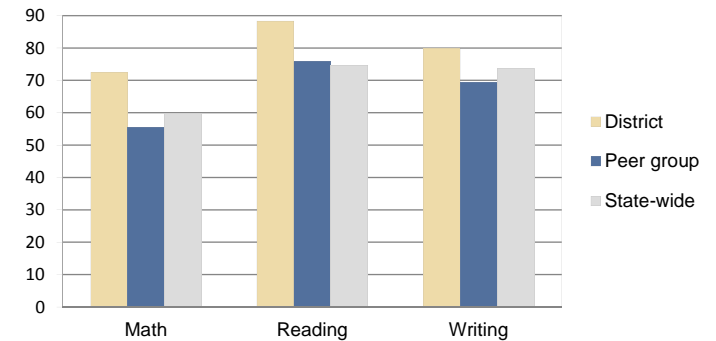


Per-pupil spending by function

	District		Peer 2010	State 2010	National 2008
	2009	2010			
Total	\$6,776	\$6,557	\$7,503	\$7,609	\$10,297
Classroom dollars	\$4,029	\$3,876	\$4,066	\$4,253	\$6,262
Nonclassroom dollars:	\$2,747	\$2,681	\$3,437	\$3,356	\$4,035
Administration	650	632	778	721	1,109
Plant Operations	847	810	973	914	1,003
Food Service	359	290	356	366	390
Transportation	152	138	356	342	438
Student Support	390	390	569	581	556
Instruction Support	349	421	405	432	539

STUDENT ACHIEVEMENT AND TEACHER INFORMATION

Percentage of students meeting state standards (AIMS)



Adequate Yearly Progress (AYP) toward federal goals

7 schools met all applicable AYP objectives for NCLB. 3 schools failed to meet 1 or more of the following objectives: percent tested (1); academic progress (2); graduation rate (1).

Student and teacher information

Measure	District	Peer Average	State Average
Attendance rate	94%	92%	94%
Graduation rate (2009)	70%	80%	76%
Poverty rate (2009)	20%	20%	21%
Student/teacher ratio	18.4	15.8	17.9
Average teacher salary	\$41,157	\$41,188	\$47,077
Average years' experience	9.2	11.6	10.6
Percent of teachers in first 3 years	9%	19%	20%

Proposition 301

Teacher and other staff pay

On average, each teacher earned \$3,791 in additional pay, and each librarian, speech pathologist, and counselor earned between \$2,713 and \$3,529.

Performance pay plan goals and results

Type of goal	Goal met?
Student achievement	■
Dropout/graduation rates	-
Student attendance	-
Parent/student satisfaction	-
Teacher attendance	-
Teacher professional development	-
Teacher evaluations	-
Tutoring	-
Other	-

■ = yes, □ = no, ▴ = partially, and - = no goal set