

Classroom Dollars and Proposition 301 Results

Hackberry Elementary School District

Mohave County

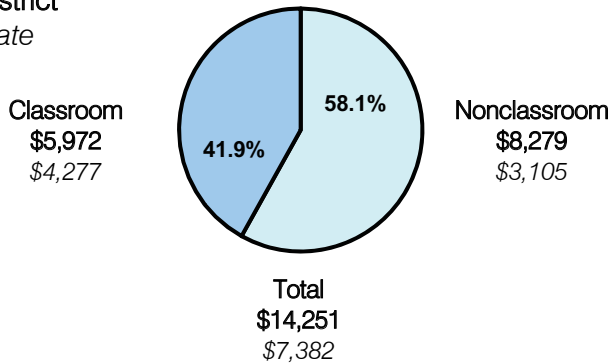
District size: Very Small
 Students attending: 63
 Number of schools: 1
 Number of certified teachers: 7

Classroom Dollars

Fiscal year 2007 averages per pupil

District

State

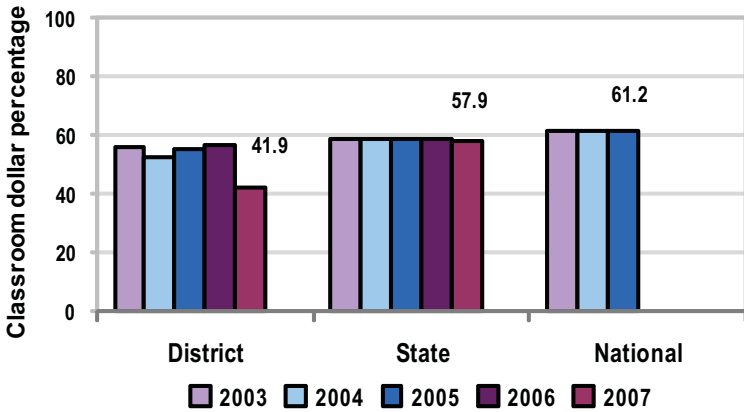


Comparative Information

	District			State
	2005	2006	2007	2007
Student/teacher ratio	11.3	11.8	9.0	17.4
Average teacher salary	\$32,155	\$35,267	\$43,647	\$43,833
Average years' experience	3.5	4.6	5.8	8.1

Classroom dollar ranking: 210 of 229 districts.

5-year comparison



Expenditures by function

	District					State	National
	2003	2004	2005	2006	2007	2007	2005
Classroom dollars	55.9	52.5	55.0	56.7	41.9	57.9	61.2
Nonclassroom dollars:							
Administration	25.5	24.7	23.3	17.2	20.3	9.5	11.0
Plant operations	8.3	10.9	8.7	12.8	15.0	11.3	9.6
Food service	2.7	2.6	5.1	6.5	6.1	4.7	3.9
Transportation	5.1	6.3	5.5	5.1	4.7	4.3	4.1
Student support	0.1	1.6	0.4	0.4	1.6	7.3	5.2
Instruction support	2.4	1.4	1.9	1.3	10.4	4.8	4.8
Other			0.1			0.2	0.2

Proposition 301

District-reported 2007 results

Teacher Pay

- On average, each teacher earned \$2,996 in additional salary, which included performance pay for fiscal year 2006 performance.

Performance

- The District accomplished some of its goals, which were based on individual, school, and district performance.
- Student achievement was measured through pre-, mid-, and post-school year tests.
- Teachers had to post grades and deliver report cards in a timely manner, communicate with the parents of at least 2 students each week, and demonstrate effective teaching techniques.
- Other goals were linked to student attendance, parent and community involvement, and teacher evaluations.

Menu

- Menu monies were used to increase teacher compensation and for professional development.