

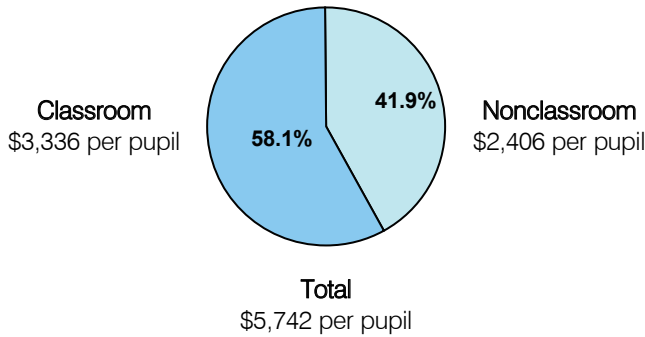
Classroom Dollars and Proposition 301 Results

Globe Unified School District

District size: Medium
 Students attending: 2,041
 Number of schools: 4
 Number of certified teachers: 113

Classroom Dollars

Fiscal year 2004

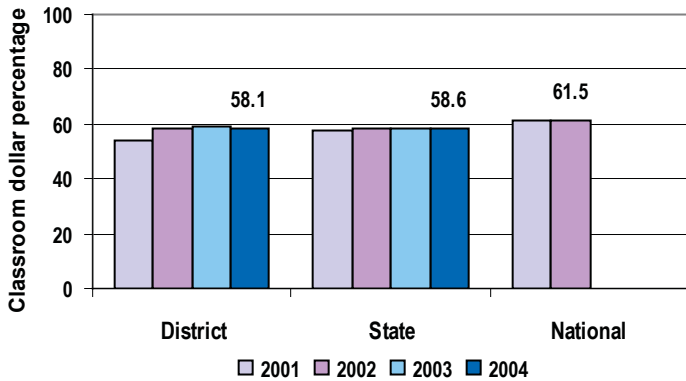


Comparative Information

	District			State
	2002	2003	2004	2004
Student/teacher ratio	19.2	19.3	18.1	18.2
Average teacher salary	\$33,209	\$35,602	\$35,729	\$38,534
Average years' experience	9.8	9.5	9.4	8.7

Classroom dollar ranking: 75 of 227 districts.

4-year comparison



Expenditures by function

	Percentage					
	District				State	National
	2001	2002	2003	2004	2004	2001
Classroom dollars	54.1	58.5	59.0	58.1	58.6	61.5
Nonclassroom dollars:						
Administration	15.6	12.8	13.7	13.4	9.5	10.9
Plant operations	12.7	12.5	11.3	11.7	11.7	9.7
Food service	5.4	5.0	5.3	5.4	4.7	4.0
Transportation	5.2	5.7	4.7	4.8	4.0	4.1
Student support	4.0	2.9	2.9	2.7	7.0	5.0
Instruction support	3.0	2.6	3.1	3.9	4.3	4.6
Other					0.2	0.2

Proposition 301

District-reported 2004 results

Teacher pay

- On average, each teacher, librarian, speech pathologist, and counselor earned between \$3,998 and \$5,638 in additional salary.

Performance

- The District accomplished most of its goals, which were based on school performance.
- When compared to last year, the percentage of 5th-grade students meeting or exceeding state standards on the AIMS test increased by 16 percent in math and 21 percent in writing.
- Additionally, the percentage of 8th-grade students meeting or exceeding state standards on the math portion of the AIMS test increased by 7 percent.

Menu

- Monies were used solely to increase eligible employee compensation.