

Florence Unified School District

Pinal County
Operational peer group: D
Legislative districts: 23

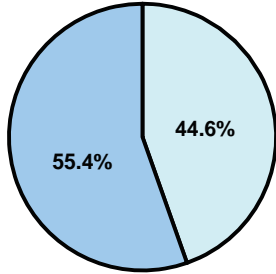
District size: Medium-Large
Students attending: 6,999
Number of schools: 8

OPERATIONAL EFFICIENCY

Average per-pupil spending

District
State

Classroom
\$3,914
\$4,497



Nonclassroom
\$3,153
\$3,411

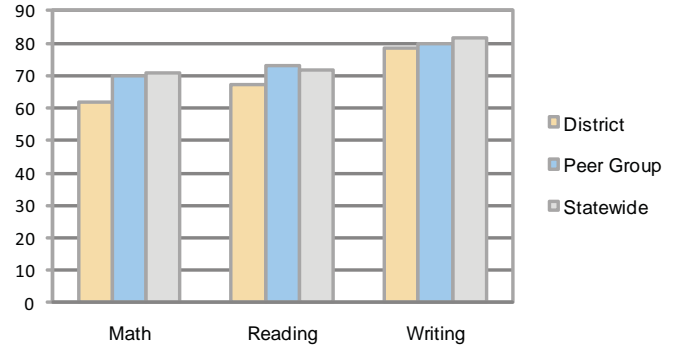
Total
\$7,067
\$7,908

5-year trend

Total spending per pupil increased by 22 percent. Spending in the classroom was very inconsistent from year to year and decreased overall from 56.4 to 55.4 percent. Spending on administration decreased, spending on transportation and student support increased, and spending in other nonclassroom areas varied from year to year.

STUDENT ACHIEVEMENT AND TEACHER INFORMATION

Percentage of students meeting state standards (AIMS)



Adequate Yearly Progress (AYP) toward federal goals

5 schools met all applicable AYP objectives for NCLB. 3 did not because they failed to meet 1 or more of the following objectives: student achievement (2); graduation rate (1).

Student and teacher information

Measure	District	Peer average	State average
Attendance rate	94%	94%	95%
Graduation rate (2008)	59%	73%	75%
Poverty rate	11%	15%	19%
Student/teacher ratio	16.7	17.2	17.1
Average teacher salary	\$38,783	\$42,175	\$45,209
Average years' experience	3.3	8.4	8.3
Percent of teachers in first 3 years	78%	34%	16%

District's cost measures relative to peer group

Operational Area	Measure	District	Peer Average	State Average
Administration	Cost per pupil	\$705	\$775	\$729
	Students per administrator	65	61	66
Plant Operations	Cost per square foot	\$7.35	\$6.13	\$6.40
	Square footage per student	120	168	144
Food Service	Cost per meal equivalent	\$2.63	\$2.64	\$2.53
Transportation	Cost per mile	\$1.88	\$2.96	\$3.36
	Miles per rider	510	307	271

Very Low Low Comparable High Very High

Per-pupil spending by function

	District 2008	District 2009	Peer 2009	State 2009	National 2007
Total	\$6,680	\$7,067	\$7,896	\$7,908	\$9,683
Classroom dollars	\$3,752	\$3,914	\$4,312	\$4,497	\$5,903
Nonclassroom dollars:	\$2,928	\$3,153	\$3,584	\$3,411	\$3,780
Administration	651	705	775	729	1,050
Plant Operations	825	884	1,032	920	951
Food Service	310	315	365	382	369
Transportation	519	500	397	343	406
Student Support	415	484	629	594	512
Instruction Support	208	265	380	431	470
Other	0	0	6	12	22

Proposition 301

Teacher pay

On average, each teacher earned \$3,740 in additional salary, and each librarian, counselor, psychologist, technology teacher, and instructional specialist earned between \$1,776 and \$4,202.

Performance pay plan goals and results

Type of goal	Goal met?
Student achievement	■
Dropout/ graduation rates	□
Student attendance	▲
Parent/student satisfaction	▲
Teacher attendance	■
Teacher professional development	▲
Teacher evaluations	▲
Tutoring	■
Other	■

■ = yes, □ = no, and ▲ = partially