

# Concho Elementary School District

Apache County  
Operational peer group: L  
Legislative districts: 5

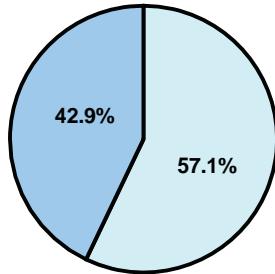
District size: Very Small  
Students attending: 188  
Number of schools: 1

## OPERATIONAL EFFICIENCY

### Average per-pupil spending

District  
State

Classroom  
**\$5,838**  
\$4,497



Nonclassroom  
**\$7,763**  
\$3,411

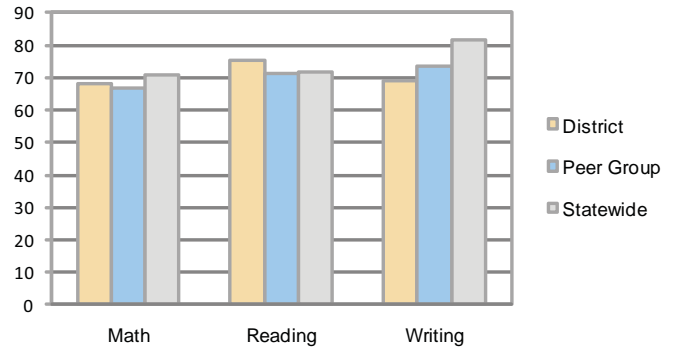
Total  
**\$13,601**  
\$7,908

### 5-year trend

Total spending per pupil increased by 11 percent. Spending in the classroom was very inconsistent year to year and decreased significantly overall from 54.1 to 42.9 percent. Spending in all nonclassroom areas increased, especially in administration and plant operations.

## STUDENT ACHIEVEMENT AND TEACHER INFORMATION

### Percentage of students meeting state standards (AIMS)



### Adequate Yearly Progress (AYP) toward federal goals

The District's school met all applicable AYP objectives for NCLB.

### Student and teacher information

Measure	District	Peer average	State average
Attendance rate	94%	94%	95%
Graduation rate (2008)	N/A	54%	75%
Poverty rate	29%	31%	19%
Student/teacher ratio	15.1	10.8	17.1
Average teacher salary	\$38,920	\$45,165	\$45,209
Average years' experience	13.4	12.7	8.3
Percent of teachers in first 3 years	15%	15%	16%

### District's cost measures relative to peer group

Operational Area	Measure	District	Peer Average	State Average
Administration	Cost per pupil	\$1,770	\$2,656	\$729
	Students per administrator	38	32	66
Plant Operations	Cost per square foot	\$9.07	\$7.53	\$6.40
	Square footage per student	218	318	144
Food Service	Cost per meal equivalent	\$2.58	\$5.10	\$2.53
Transportation	Cost per mile	\$0.81	\$1.79	\$3.36
	Miles per rider	1,898	710	271

Very Low    Low    Comparable    High    Very High

### Per-pupil spending by function

	District		Peer	State	National
	2008	2009	2009	2009	2007
<b>Total</b>	<b>\$12,893</b>	<b>\$13,601</b>	<b>\$16,311</b>	<b>\$7,908</b>	<b>\$9,683</b>
<b>Classroom dollars</b>	<b>\$5,220</b>	<b>\$5,838</b>	<b>\$8,757</b>	<b>\$4,497</b>	<b>\$5,903</b>
<b>Nonclassroom dollars:</b>	<b>\$7,673</b>	<b>\$7,763</b>	<b>\$7,554</b>	<b>\$3,411</b>	<b>\$3,780</b>
Administration	2,010	1,770	2,656	729	1,050
Plant Operations	1,760	1,977	2,297	920	951
Food Service	481	510	859	382	369
Transportation	2,083	2,255	930	343	406
Student Support	747	648	474	594	512
Instruction Support	592	603	338	431	470
Other	0	0	0	12	22

### Proposition 301

#### Teacher pay

On average, each teacher earned \$4,733 in additional salary, and each instructional aide earned an additional \$100.

#### Performance pay plan goals and results

Type of goal	Goal met?
Student achievement	■
Dropout/ graduation rates	
Student attendance	
Parent/student satisfaction	
Teacher attendance	
Teacher professional development	■
Teacher evaluations	
Tutoring	
Other	■

■ = yes, □ = no, and ▬ = partially