

Classroom Dollars and Proposition 301 Results

Bullhead City Elementary School District

Mohave County

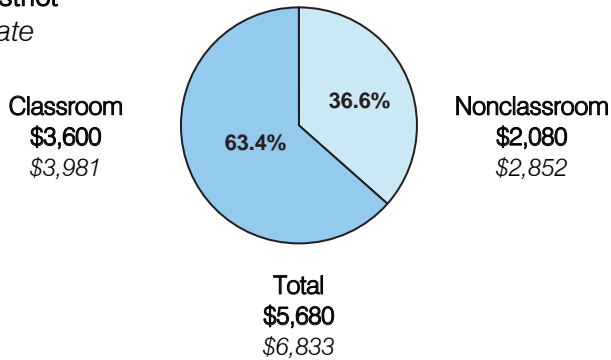
District size: Medium
 Students attending: 3,844
 Number of schools: 7
 Number of certified teachers: 222

Classroom Dollars

Fiscal year 2006 averages per pupil

District

State

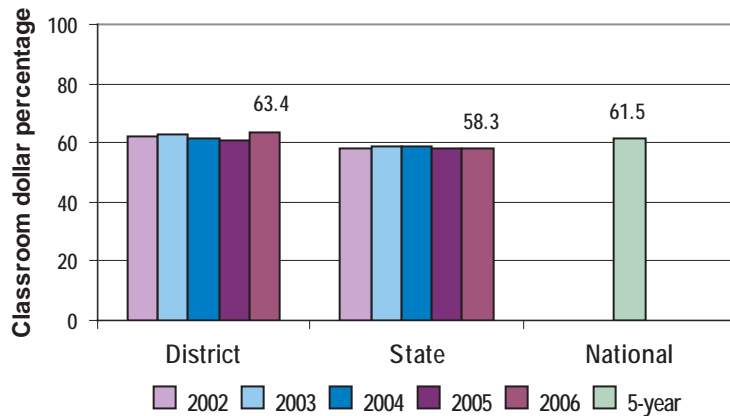


Comparative Information

	District			State
	2004	2005	2006	2006
Student/teacher ratio	17.4	17.2	17.3	17.7
Average teacher salary	\$37,607	\$35,364	\$37,070	\$42,967
Average years' experience	6.2	6.0	5.9	8.3

Classroom dollar ranking: 12 of 229 districts.

5-year comparison



Expenditures by function

	District					State	National
	2002	2003	2004	2005	2006	2006	5-year
Classroom dollars	62.3	62.9	61.3	60.9	63.4	58.3	61.5
Nonclassroom dollars:							
Administration	10.7	10.1	10.4	9.4	9.1	9.4	11.0
Plant operations	8.2	8.6	8.9	9.6	9.0	11.2	9.6
Food service	6.0	5.6	6.2	6.1	6.0	4.7	3.9
Transportation	3.5	3.6	4.0	4.1	4.1	4.2	4.0
Student support	4.9	4.4	4.3	4.6	3.3	7.2	5.1
Instruction support	4.1	4.8	4.9	5.3	5.1	4.8	4.7
Other	0.3					0.2	0.2

Proposition 301

District-reported 2006 results

Teacher pay

- On average, each teacher earned an additional \$6,845 in salary.

Performance

- The District accomplished its goals, which were based on individual performance.
- Teachers participated in professional development activities and leadership activities, such as school- and district-level committees.

Menu

- Monies were used solely to increase teacher compensation.