

# Benson Unified School District

Cochise County  
Operational peer group: E  
Legislative districts: 25

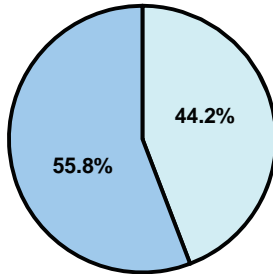
District size: Medium  
Students attending: 1,078  
Number of schools: 4

## OPERATIONAL EFFICIENCY

### Average per-pupil spending

District  
State

**Classroom**  
\$4,532  
\$4,497



**Nonclassroom**  
\$3,590  
\$3,411

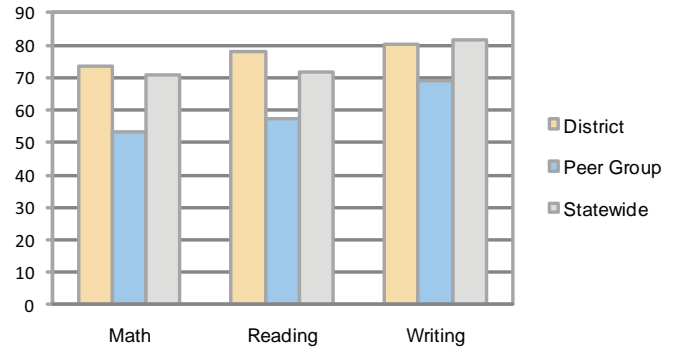
**Total**  
\$8,122  
\$7,908

### 5-year trend

Total spending per pupil increased by 17 percent. Spending in the classroom was fairly stable and decreased overall from 57.4 to 55.8 percent. Spending on administration increased significantly and spending on plant operations decreased. Spending in other nonclassroom areas remained fairly stable.

## STUDENT ACHIEVEMENT AND TEACHER INFORMATION

### Percentage of students meeting state standards (AIMS)



### Adequate Yearly Progress (AYP) toward federal goals

3 of the District's schools met all applicable AYP objectives for NCLB. 1 school did not because it did not have a sufficient graduation rate.

### Student and teacher information

Measure	District	Peer average	State average
Attendance rate	95%	93%	95%
Graduation rate (2008)	80%	70%	75%
Poverty rate	24%	31%	19%
Student/teacher ratio	15.9	14.9	17.1
Average teacher salary	\$42,676	\$41,086	\$45,209
Average years' experience	12.1	11.1	8.3
Percent of teachers in first 3 years	22%	20%	16%

### District's cost measures relative to peer group

Operational Area	Measure	District	Peer Average	State Average
Administration	Cost per pupil	\$986	\$1,148	\$729
	Students per administrator	52	51	66
Plant Operations	Cost per square foot	\$6.82	\$5.49	\$6.40
	Square footage per student	166	253	144
Food Service	Cost per meal equivalent	\$2.98	\$3.07	\$2.53
Transportation	Cost per mile	\$3.15	\$2.53	\$3.36
	Miles per rider	291	359	271

Very Low   Low   Comparable   High   Very High

### Per-pupil spending by function

	District		Peer	State	National
	2008	2009	2009	2009	2007
<b>Total</b>	<b>\$8,296</b>	<b>\$8,122</b>	<b>\$9,562</b>	<b>\$7,908</b>	<b>\$9,683</b>
<b>Classroom dollars</b>	<b>\$4,724</b>	<b>\$4,532</b>	<b>\$4,925</b>	<b>\$4,497</b>	<b>\$5,903</b>
<b>Nonclassroom dollars:</b>	<b>\$3,572</b>	<b>\$3,590</b>	<b>\$4,637</b>	<b>\$3,411</b>	<b>\$3,780</b>
Administration	1,126	986	1,148	729	1,050
Plant Operations	1,098	1,133	1,379	920	951
Food Service	355	302	444	382	369
Transportation	417	439	554	343	406
Student Support	423	547	749	594	512
Instruction Support	153	183	356	431	470
Other	0	0	7	12	22

### Proposition 301

#### Teacher pay

On average, each teacher, librarian, speech pathologist, and counselor earned between \$6,274 and \$6,300 in additional salary.

#### Performance pay plan goals and results

Type of goal	Goal met?
Student achievement	■
Dropout/ graduation rates	■
Student attendance	
Parent/student satisfaction	■
Teacher attendance	
Teacher professional development	
Teacher evaluations	
Tutoring	
Other	

■ = yes, □ = no, and ▲ = partially