

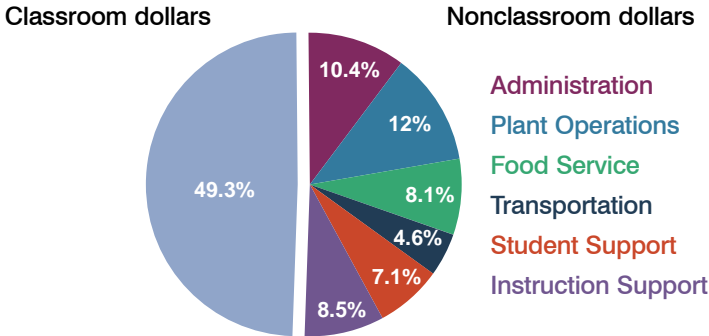
Balsz Elementary School District

Maricopa County
Peer groups: Efficiency Group 9, Achievement Group 16
Legislative district(s): 11, 14, 15 and 16

District size: Medium-Large
Students attending: 2,536
Number of schools: 5

OPERATIONAL EFFICIENCY

Spending by operational area



5-year trend

Total spending per pupil increased by 33 percent. Spending in the classroom decreased significantly from 58.9 to 49.3 percent. Overall, spending on administration, plant operations, transportation, and instruction support increased, while spending on other nonclassroom areas varied year to year.

District's cost measures relative to peer group

Operational Area	Measure	District	Peer Average	State Average
Administration	Cost per pupil	\$896	\$828	\$728
	Students per administrator	77	72	66
Plant Operations	Cost per square foot	\$6.15	\$6.46	\$6.10
	Square footage per student	169	132	152
Food Service	Cost per meal equivalent	\$2.24	\$2.30	\$2.45
Transportation	Cost per mile	\$9.88	\$5.00	\$3.39
	Miles per rider	134	136	283

Very low Low Comparable High Very high

Per-pupil spending by operational area

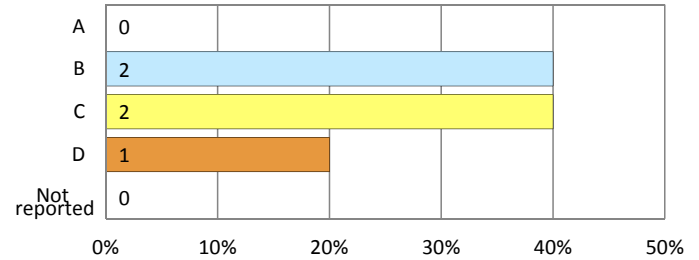
	District		Peer 2011	State 2011	National 2009
	2010	2011			
Total	\$9,025	\$8,637	\$7,334	\$7,485	\$10,591
Classroom dollars	\$4,634	\$4,257	\$3,806	\$ 4,098	\$ 6,456
Nonclassroom dollars:	\$4,391	\$4,380	\$3,528	\$ 3,387	\$ 4,135
Administration	974	896	828	728	1,147
Plant Operations	1,082	1,039	854	927	1,033
Food Service	614	696	507	375	404
Transportation	391	395	268	352	443
Student Support	688	614	554	571	573
Instruction Support	642	740	517	434	535

STUDENT ACHIEVEMENT AND TEACHER INFORMATION

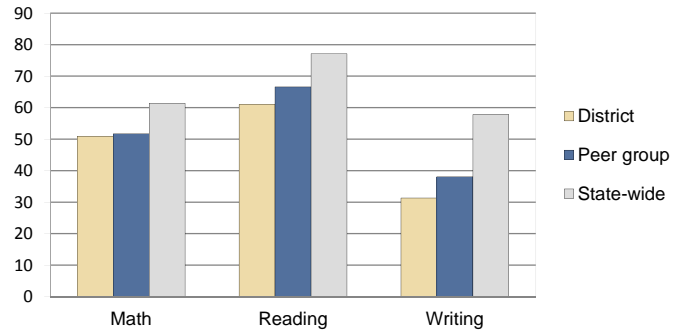
District and school letter grades

District grade: **C**

School grades (number and percentage):



Percentage of students meeting state standards (AIMS)



Student and teacher information

Measure	District	Peer Average	State Average
Attendance rate	95%	95%	95%
Graduation rate (2010)	N/A	N/A	N/A
Poverty rate (2010)	47%	46%	22%
Students per teacher	15.2	17.6	18.1
Average teacher salary	\$42,137	\$45,321	\$45,637
Average years of experience	10.1	9.5	10.9
Percent of teachers in first 3 years	17%	21%	16%

Proposition 301 pay, goals, and results

Average additional salary earned by teachers: \$2,576

Type of goal	Goal met?
Student achievement	■
Dropout/graduation rates	-
Student attendance	-
Parent/student satisfaction	■
Teacher attendance	-
Teacher professional development	■
Teacher evaluations	-
Tutoring	-
Other	-

■ = yes, □ = no, ▴ = partially, and - = no goal set