

Alpine Elementary School District

Apache County
Operational peer group: L
Legislative districts: 5

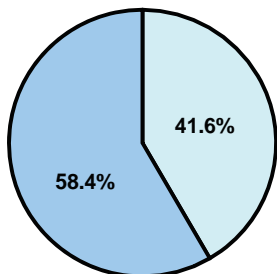
District size: Very Small
Students attending: 46
Number of schools: 1

OPERATIONAL EFFICIENCY

Average per-pupil spending

District
State

Classroom
\$9,629
\$4,497



Nonclassroom
\$6,870
\$3,411

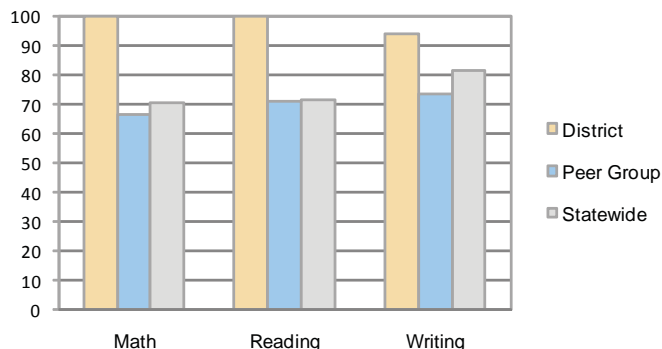
Total
\$16,499
\$7,908

5-year trend

Total spending per pupil increased by 62 percent. Spending in the classroom varied year to year and increased significantly overall from 52.3 to 58.4 percent. Spending on plant operations and student support decreased significantly, while spending in other nonclassroom areas varied year to year.

STUDENT ACHIEVEMENT AND TEACHER INFORMATION

Percentage of students meeting state standards (AIMS)



Adequate Yearly Progress (AYP) toward federal goals

The District's school met all applicable AYP objectives for NCLB.

District's cost measures relative to peer group

Operational Area	Measure	District	Peer Average	State Average
Administration	Cost per pupil	\$2,614	\$2,656	\$729
	Students per administrator	31	32	66
Plant Operations	Cost per square foot	\$5.80	\$7.53	\$6.40
	Square footage per student	321	318	144
Food Service	Cost per meal equivalent	N/A	\$5.10	\$2.53
Transportation	Cost per mile	\$0.73	\$1.79	\$3.36
	Miles per rider	1,379	710	271

Very Low Low Comparable High Very High

Student and teacher information

Measure	District	Peer average	State average
Attendance rate	96%	94%	95%
Graduation rate (2008)	N/A	54%	75%
Poverty rate	33%	31%	19%
Student/teacher ratio	8.4	10.8	17.1
Average teacher salary	\$49,736	\$45,165	\$45,209
Average years' experience	7.8	12.7	8.3
Percent of teachers in first 3 years	0%	15%	16%

Proposition 301

Teacher pay

On average, each teacher earned \$4,400 in additional salary.

Performance pay plan goals and results

Type of goal	Goal met?
Student achievement	■
Dropout/ graduation rates	■
Student attendance	■
Parent/student satisfaction	■
Teacher attendance	■
Teacher professional development	■
Teacher evaluations	■
Tutoring	■
Other	■

■ = yes, □ = no, and ▮ = partially

Per-pupil spending by function

	District		Peer 2009	State 2009	National 2007
	2008	2009			
Total	\$16,441	\$16,499	\$16,311	\$7,908	\$9,683
Classroom dollars	\$9,246	\$9,629	\$8,757	\$4,497	\$5,903
Nonclassroom dollars:	\$7,195	\$6,870	\$7,554	\$3,411	\$3,780
Administration	2,271	2,614	2,656	729	1,050
Plant Operations	2,453	1,860	2,297	920	951
Food Service	43	56	859	382	369
Transportation	1,365	1,356	930	343	406
Student Support	471	259	474	594	512
Instruction Support	592	725	338	431	470
Other	0	0	0	12	22